



Operator's Instruction Manual

NEW SINGLE-DISC FLOOR GRINDER

ELECTRIC



SEC-NG-1.5
DIRECT DRIVE



100 Thomas Johnson Drive, Frederick, MD 21702-4600 USA
Phone: 301-638-3326 • 301-663-1600
Fax: 800-447-3326 • 301-663-1607
edcoinc.com • sales@edcoinc.com



READ AND UNDERSTAND THE OPERATORS INSTRUCTION MANUAL THOROUGHLY BEFORE ATTEMPTING TO OPERATE THIS EQUIPMENT.

Death or serious injury could occur if this machine is used improperly.

SAFETY MESSAGES

- Safety instructions are preceded by a graphic alert symbol of DANGER, WARNING, or CAUTION.
- Indicates an imminent hazard which, if not avoided, will result in death or serious injury.



- Indicates an imminent hazard which, if not avoided, can result in death or serious injury.



- Indicates hazards which, if not avoided, could result in serious injury and/or damage to the equipment.



GASOLINE/PROPANE POWERED EQUIPMENT

- Engine exhaust: from this product contains chemicals known to the State of California to cause cancer, birth defects or other reproductive harm.
- Gasoline is extremely flammable and poisonous. It should only be dispensed in well ventilated areas, and with a cool engine.



- Small gasoline engines produce high concentrations of carbon monoxide (CO) example: a 5 HP 4 cycle engine operation in an enclosed 100,000 cu. ft. area with only one change of air per hour is capable of providing deadly concentrations of CO in less than fifteen minutes. Five changes of air in the same area will produce noxious fumes in less than 30 minutes. Gasoline or propane powered equipment should not be used in enclosed or partially enclosed areas. Symptoms of CO poisoning include, headache, nausea, weakness, dizziness, visual problems and loss of consciousness. If symptoms occur - get into fresh air and seek medical attention immediately.

ELECTRICAL POWERED EQUIPMENT

- Extreme care must be taken when operating electric models with water present. Ensure power cord is properly grounded, is attached to a Ground-Fault-Interrupter (GFI) outlet, and is undamaged.



- Check all electrical cables - be sure connections are tight and cable is continuous and in good condition. Be sure cable is correctly rated for both the operating current and voltage of this equipment.
- Improper connection of the equipment-grounding conductor can result in a risk of electric shock. Check with qualified electrician or service person if there is any doubt as to whether the outlet is properly grounded. Adhere to all local codes and ordinances.
- NOTE: In the event of a malfunction or breakdown, grounding provides a path of least resistance for the electric current to dissipate. The motor is equipped with a grounded plug and must be connected to an outlet that is properly installed and properly grounded. DO NOT modify the plug provided on the motor. If the plug does not fit the outlet have a qualified electrician install the proper receptacle.
- Switch motor OFF **before** disconnecting power.

2

301-638-3326 • edcoinc.com • sales@edcoinc.com

- Do not disconnect power by pulling cord. To disconnect, grasp the plug, not the cord.
- Unplug power cord at the machine when not in use and before servicing.

GENERAL INSTRUCTIONS

- Equipment should only be operated by trained personnel in good physical condition and mental health (not fatigued). The operator and maintenance personnel must be physically able to handle the bulk weight and power of this equipment.
- This is a one person tool. Maintain a safe operating distance to other personnel. It is the operator's responsibility to keep other people (workers, pedestrians, bystanders, etc.) away during operation. Block off the work area in all directions with roping, safety netting, etc. for a safe distance. Failure to do so may result in others being injured by flying debris or exposing them to harmful dust and noise.
- This equipment is intended for commercial use only.
- For the operator's safety and the safety of others, always keep all guards in place during operation.
- Never let equipment run unattended.



- Personal Protection Equipment and proper safety attire must be worn when operating this machinery. The operator must wear approved safety equipment appropriate for the job such as hard hat and safety shoes when conditions require. Hearing protection MUST be used (operational noise levels of this equipment may exceed 85db). Eye protection MUST be worn at all times.

- Keep body parts and loose clothing away from moving parts. Failure to do so could result in dismemberment or death.
- Do not modify the machine.
- Stop motor/engine when adjusting or servicing this equipment.

- Maintain a safe operating distance from flammable materials. Sparks from the cutting-action of this machine can ignite flammable materials or vapors.

DUST WARNING



- Some dust created by power sanding, sawing, grinding, drilling, and other construction activities contains chemicals known to cause cancer, birth defects, or other reproductive harm. Some examples of these chemicals are:
 - Lead based paints, and
 - Crystalline silica from bricks and concrete and other masonry products.
- Your risk of exposure to these chemicals varies depending on how often you do this type of work. To reduce your risk: work in a well ventilated area, use a dust control system, such as an industrial-style vacuum, and wear approved personal safety equipment, such as a dust/particulate respirator designed to filter out microscopic particles.



SMI DUST AND SILICA WARNING



Grinding/cutting/drilling of masonry, concrete, metal and other materials can generate dust, mists and fumes containing chemicals known to cause serious or fatal injury or illness, such as respiratory disease, cancer, birth defects or other reproductive harm. If you are unfamiliar with the risks associated with the particular process and/or material being cut or the composition of the tool being used, review the material safety data sheets and/or consult your employer, the manufacturers/suppliers, governmental agencies such as OSHA and NIOSH and other sources on hazardous materials. California and some other authorities, for instance, have published lists of substances known to cause cancer, reproductive toxicity, or other harmful effects.

Control dust, mist and fumes at the source where possible. In this regard use good work practices and follow the recommendations of the manufacturers/suppliers, OSHA/NIOSH, and occupational and trade associates. Water should be used for dust suppression when wet grinding/cutting/drilling is feasible. When the hazards from inhalation of dust, mists and fumes cannot be eliminated, the operator and any bystanders should always wear a respirator approved by NIOSH/OSHA for the material being used.



Grinding/cutting/drilling of masonry, concrete and other materials with silica in their composition may give off dusts or mists containing crystalline silica. Silica is a basic component of sand, quartz, brick clay, granite and numerous other minerals and rocks. Repeated and/or substantial inhalation of airborne crystalline silica can cause serious or fatal respiratory diseases, including silicosis. In addition, California and some other authorities have listed respirable crystalline silica as a substance known to cause cancer. When grinding/cutting/drilling such materials, always follow the respiratory precautions mentioned above.

3

301-638-3326 • edcoinc.com • sales@edcoinc.com



Table of Contents

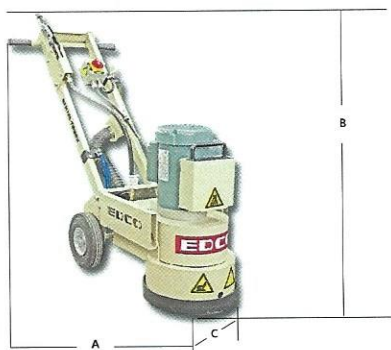
Safety and Warnings	2-3
Table of Contents	4
Specifications	5
Operating Controls	6
Getting started with your New Grinder	7-10
Operating Instructions	11-12
Attaching a Vacuum	13
Servicing Head Assembly	13
Quick Change Multi-Accessory Disc	14-15
Maintenance Instructions	16
Maintenance Schedule	17
Limited Equipment Warranty	19

4

301-638-3326 • edcoinc.com • sales@edcoinc.com



SPECIFICATIONS



NOTE: All dimensions and weights are for reference only and subject to change at any time.

Figure 1

HOW TO ORDER REPAIR PARTS

To insure product safety and reliability, always use genuine EDCO replacement parts when making repairs to the equipment.

When ordering parts, please specify the MODEL and SERIAL NUMBER of the machine as given on the NAMEPLATE. In addition, give part number, description and quantity as listed on the parts list.

Please note: Due to improvements and changes in the equipment the illustrations shown may be different from the actual machine.

Toll Free: Phone 1-800-638-3326 • Fax 1-800-447-3326

	SEC-NG-1.5
"A"	45" 114cm
"B"	40" 102cm
"C"	22" 56cm
—	—
Head RPM	839
Weight	188 lbs/86kg

5

301-638-3326 • edcoinc.com • sales@edcoinc.com



OPERATING CONTROLS

PLEASE NOTE:

Controls shown are for the model indicated. The location of these controls may vary on the different models. Due to improvements and changes in the equipment, the illustrations shown may vary from the actual machine.

ELECTRIC MODEL

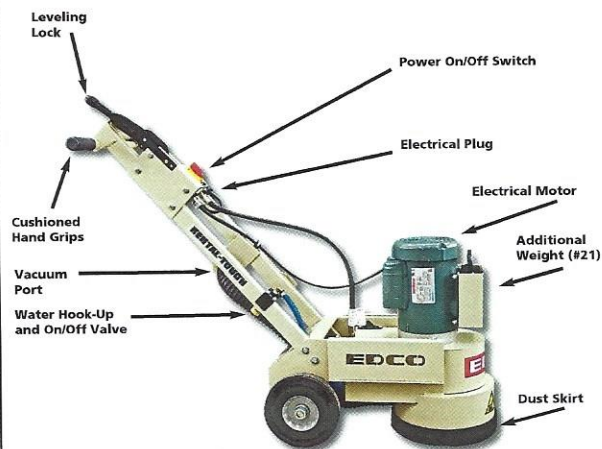


Figure 2

6

301-638-3326 • edcoinc.com • sales@edcoinc.com



GETTING STARTED WITH YOUR NEW GRINDER



1. LOADING TOOLS:

Lean the machine back on the handle to expose the work area and load the proper tools for your job. Electric machines should be unplugged.



LOADING TOOLS:

Once all tools are in the proper position return the machine to upright. Remember if you are using tools with PCD's on Stripserts they have a leading edge and must be loaded as such. Also, remember the disc turns in the direction of arrow decal.

NOTE: The above illustrations are viewing the Machine from the front bottom.
NOTE the direction of rotation.

7

301-638-3326 • edcoinc.com • sales@edcoinc.com

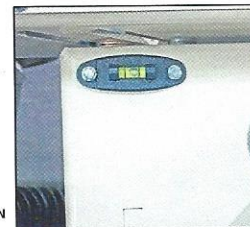


GETTING STARTED WITH YOUR NEW GRINDER



2. BEGIN THE LEVELING PROCESS:

With the machine in the upright position release the level locking lever.



LEVELING PROCESS:

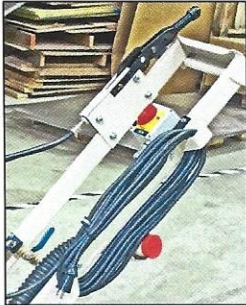
Rock the machine back and forth until the bubble level is centered. This gets the machine close to the proper operating position.

8

301-638-3326 • edcoinc.com • sales@edcoinc.com

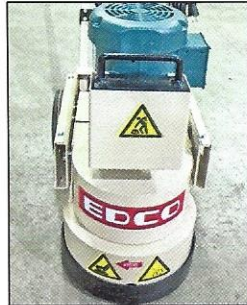


GETTING STARTED WITH YOUR NEW GRINDER



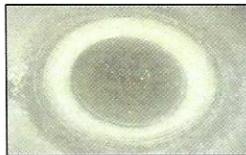
LOADING TOOLS:

Return level lock to the locked position.



LOADING TOOLS:

Lean back slightly on the handle to get the tools off the surface and start the machine. Lower the machine to the surface and do a short touch pass on the concrete.



LEVELING:

You are looking for a complete circle.



LEVELING:

If you see a partial circle repeat the process until complete circle is achieved.

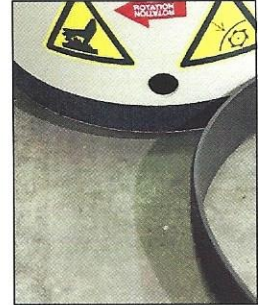


GETTING STARTED WITH YOUR NEW GRINDER



LEVELING:

The bubble on the machine will not necessarily be centered once optimum operating position is achieved. It will also float back and forth during grinding. Level on your machine may not be the same as pictured above.



ATTACH THE SKIRT:

Spacing approximately 1/2" off surface for best vacuum performance.

FINAL NOTE: If you are using tools that have no directionality they should be rotated occasionally for longer life and the machine should be readjusted as needed.



OPERATING INSTRUCTIONS

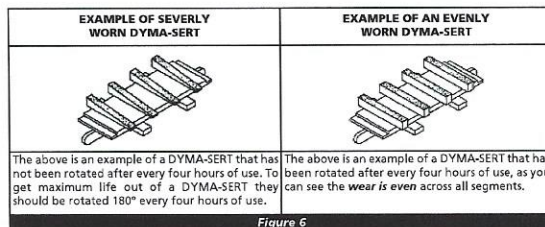
WARNING

- Read and understand all operating instructions before operating this equipment. Death or serious injury can result if this machine is used improperly.
- Concrete grinders are designed to be used to grind flat horizontal concrete slabs using EDCO approved accessories.
- The machines are equipped with electric motors.
- They are designed to be controlled by a single operator from a position at the rear of the machine.
- When operating equipment maintain a safe distance from other personnel in the area.

BE SURE TO READ THE COMPLETE INSTRUCTIONS SUPPLIED WITH YOUR MACHINE

IMPORTANT: Perform Pre-Start Check

- Visually inspect the equipment for wear or damage.
- Be sure all guards are in place and functioning properly.
- Do not operate unless all guards are in place and secure.
- Perform all daily maintenance.
- Check to be sure water tubes are functioning properly if performing wet-grinding operations.
- Inspect accessories - Be sure the correct accessory is installed properly on the machine, mounting arrangement and its intended use.
- Check accessories for damage (see figure 6, below), the type of wear or damage will vary with the type of accessory.
- Inspect work area to determine the presence and location of deck inserts, pipes, columns and objects protruding from the slab surface so that they may be avoided during the grinding operation.
- **FOR WET GRINDING:** Attach the water supply. A flow rate of approximately 1/2 gallon per minute is recommended.

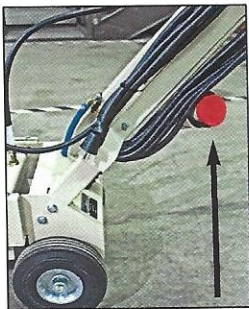


OPERATING INSTRUCTIONS

- **BEFORE STARTING THE MOTOR:** Raise the front of the machine clear of the working surface.
- **START MOTOR AND ALLOW IT TO REACH OPERATING SPEED:** Position the grinder at the starting point. Bring the motor to full speed. Lower the machine onto the slab surface. Use a slow sweeping motion from left to right and back continuously, and do not force the machine into the work, the motor should not strain when grinding.
- **WHEN WET GRINDING:** Water is required. Attach the water hose to the water hook-up valve. Use the valve to control the water flow.
- **FOR DRY GRINDING:** Provide a respirator and dust control system.
- **TO STOP THE MACHINE:** Stop forward motion, tilt machine to raise off of floor. Turn power switch off and let the engine come to a complete stop. Turn off the water supply.
- **WHEN MANEUVERING THE GRINDER:** Tilt grinder back enough so it does not strike the slab surface. Damage to accessories may occur with inadvertent contact with slab.
- **DO NOT FORCE GRINDER WHILE GRINDING**
- **IF THE POWER SOURCE FAILS:** Raise the grinder off of the floor. Disconnect the power source. Inspect the accessories for damage. Replace damaged (or questionable) accessories immediately.
- **WHEN TRANSPORTING THE GRINDER:** Disconnect the power source before lifting or removing any guards. Remove accessories when transporting.
- **WHEN HOISTING OR LIFTING A GRINDER:** Always inspect frame and attaching hardware for damage before lifting. Use proper safe hoisting and lifting techniques and hardware.



ATTACHING A VACUUM / SERVICING HEAD ASSEMBLY



PROCEDURE FOR ATTACHING A VACUUM:

If using a vacuum for dust control attach it to the vacuum port at the rear of the machine which is on the handle as pictured above, securing it with clamps. The port is shown in the above photo.



SERVICING HEAD ASSEMBLY:

Access opening to remove roll pin. Align drive pin with opening by manually turning head. Use a hammer and a drift pin of suitable size to drive roll pin through and out. With roll pin out head will drop out of machine for servicing.

13

301-638-3326 • edcoinc.com • sales@edcoinc.com



FOR USE WITH QUICK-CHANGE MULTI-ACCESSORY DISC



DOUBLE DIAMOND DOTS: General Purpose Grind - Removes general purpose epoxy, mastics, thinsets, water-proofing coatings and more.



SINGLE DIAMOND DOTS: Aggressive Grind - Grinds and removes thick epoxies, weather-proofing membrane and other coatings.



PCD ACCESSORY: Extremely Aggressive Removal - Digs through industrial strength coverings, water-proofing membranes, thick epoxies and much more - Leaves a textured concrete surface.



EDCO ARROW: Hard glue removal, fast coating removal, create smooth surfaces and more



PEAKS: General Purpose Grind - Smooths surfaces with fewer scratches - Ideal for concrete preparation and polishing. Removes thinsets, concrete coatings and more

15

301-638-3326 • edcoinc.com • sales@edcoinc.com



MAINTENANCE INSTRUCTIONS



1. Disconnect the machine from the power source. Disconnect the supply voltage connector at the machine on electric models before performing any maintenance. All maintenance to be performed by qualified personnel.
 2. Never work under equipment without first properly securing the equipment to prevent it from moving or falling. Always work on a flat and level surface.
 3. Perform a visual inspection of the entire machine before each operation. Be sure all fasteners are tight and secure, check for signs of metal cracking or fatigue, inspect for damage to electrical wiring, and inspect to be sure proper guards are in place and secure.
 4. Before operation, check grinding discs to be sure they are tight. Grinding discs loosen with use. Tighten bolts (5 on each disc) as required.
 5. Before operation, check Neoprene bushing for wear and replace as necessary.
- An occasional drop of oil on the wheel bearings will help prevent binding.

16

301-638-3326 • edcoinc.com • sales@edcoinc.com



SURFACE PREPARATION, RESORATION, PROFESSIONAL SAWING EQUIPMENT & HAND HELD TOOLS

100 Thomas Johnson Drive, Frederick, MD 21702
Phone: 1-800-638-3326 or 301-663-1600
Fax: 1-800-447-3326 or 301-663-1607

Email: sales@edcoinc.com
Website: edcoinc.com

Patents Pending & Issued



Printing 1.2014

301-638-3326 • edcoinc.com • sales@edcoinc.com